



17A, KELLY STREET, GREENOCK, PA16
8JY





Description

CLOSING DATE MONDAY 2ND OCTOBER AT 11AM

Occupying a corner setting within a popular West End location next to the McLean Museum & Art Gallery this immaculately presented, generous sized three bedroom GROUND FLOOR FLAT has been comprehensively upgraded in recent years to an exacting standard offering an excellent home for families The luxury kitchen was refitted in 2022 plus new wet room and wc compartment installed in 2018. Internal walls have been replastered and feature wall panelling installed.

Conveniently positioned for local amenities, the town centre and transport facilities including Greenock West railway station. Specification includes: double glazing and gas central heating (both installed in 2017). There is a private cellar. Shared rear drying green. The building is protected by a security door entry system. Access to the flat is by a well maintained communal close with ornate handrail.

The character filled apartments comprise: Entrance Vestibule by timber door with single glazed panel above, A glazed door leads to the Reception Hallway with inbuilt cupboard. The stunning Lounge offers period style detailing and two alcoves.

There is a quality fitted Dining Kitchen with blue toned fitted units and solid quartz work surfaces. Appliances include: stainless steel chimney extractor hood, 5 ring gas hob, electric oven, integrated fridge/freezer, dishwasher & washing machine. There is ample space for table and chairs which is perfect for family living.

There are three double sized Bedrooms. The 1st bedroom benefits from a walk in wardrobe, plus storage cupboard. There is a quality refitted Wet Room with side window and suite offering: pedestal wash hand basin set, wc and chrome style shower. Additional benefits include: wall tiling, wet floor plus chrome style heated towel rail. The WC Compartment offers vanity wash hand basin set within white high gloss unit, wc and wall tiling.

Internal inspection is essential. EPC = C

Measurements

Entrance Vestibule

Reception Hallway

Lounge

4.67m x 5.33m (15'4 x 17'6)

Dining Kitchen

3.30m x 4.32m (10'10 x 14'2)

Bedroom 1

5.05m x 3.51m (16'7 x 11'6)

Bedroom 2

3.53m x 3.28m (11'7 x 10'9)

Bedroom 3

3.56m x 3.02m (11'8 x 9'11)

Bathroom

WC Compartment



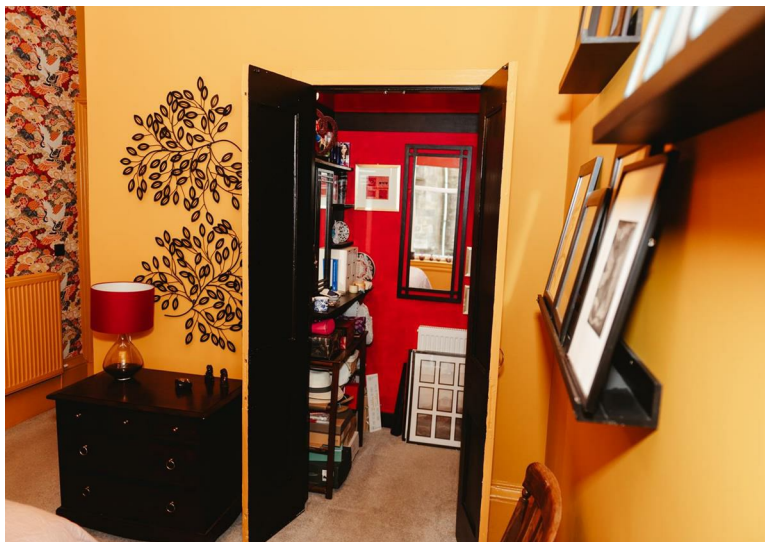
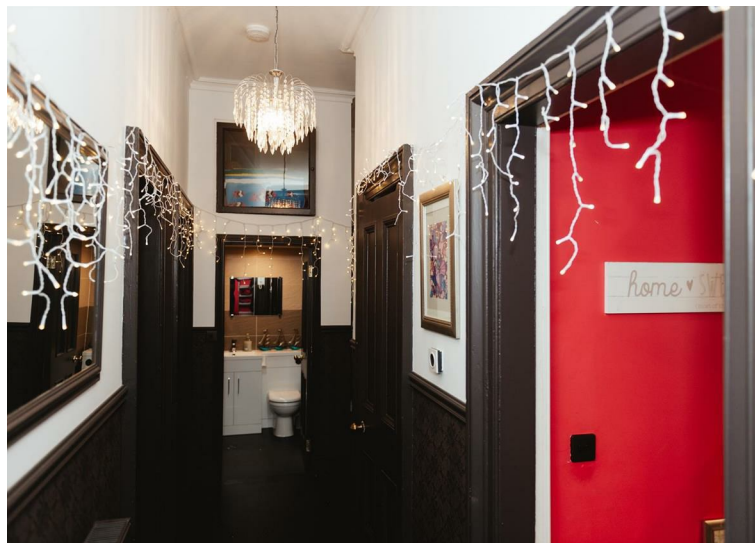
Floorplans are indicative only - not to scale
Produced by Plushplans 











The
next
step..



To view call 01475 888400. Speak to us 7 days a week until 11pm every day to book your viewing appointment.

House to sell or rent?

Call 01475 888400 to book your free market appraisal.

Require a solicitor?

Ask us to supply a free legal quotation from Neill Clerk & Murray, Solicitors.
www.neillclerkmurray.co.uk

Stay fully up-to-date by following Neill Clerk on:



**60 West Blackhall Street
Greenock
Renfrewshire
PA15 1UY**

t: 01475 888400

e: sales@neillclerk.co.uk

w: www.neillclerk.co.uk



Agents Notes:

These sales particulars are set out as a general outline only, issued in good faith, but do not constitute representations of fact and do not form part of any offer or contract. Any services, equipment, appliances, fittings or central heating systems have not been tested and no warranty is given or implied that these are in working order. All measurements are approximate and for guidance only.

Neither Neill Clerk Estate Agents nor any of its employees or agents has any authority to make or give any representation or warranty whatever in relation to this property.

Find all our properties at: [rightmove](https://www.rightmove.co.uk) [Zoopla](https://www.zoopla.co.uk) [onTheMarket.com](https://www.onthemarket.com) [s1homes.com](https://www.s1homes.com)